

# Community-led Resilience Teams for Business



BUILDING STRONGER COMMUNITIES

## What is a Business Community-led Resilience Team (CRT)?

A Business Community-led Resilience Team (CRT) is an all-hazards approach specific for businesses to prepare together before emergencies; activate a local communication network during emergencies; and support recovery after emergencies. A CRT is community-led; it is formed by businesses for businesses with support from Red Cross and other services.

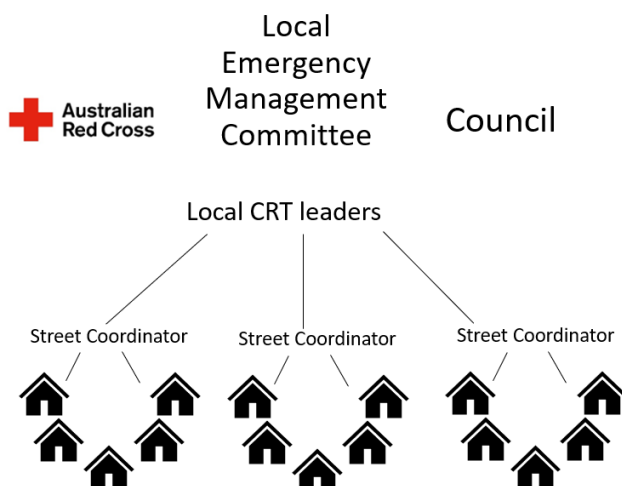
## How will a CRT help me and my business?

Is your business prepared for an emergency? Do you have a Business Continuity Plan? What is your trigger to pack up your business? CRTs provide community connectedness, education on property and business preparedness, as well as a communication network to share and receive information. Working together as a community builds resilience and empowers businesses to know their trigger points and when it's the best time to start pack and / or leave.

At its core, a CRT is a communication network linking neighbours / businesses, which provides support around emergency preparedness and recovery. A CRT helps businesses to:

- link to emergency services agencies for expert advice before emergencies
- connect with services that support business preparedness and recovery (e.g. Service NSW, Business Connect, Council Economic Development Team)
- support individual and joint emergency preparedness amongst neighbours / neighbouring businesses
- raise awareness of local disaster risks
- combine resources to improve community preparedness and recovery.

A CRT is not a response team and does not perform rescues. A CRT provides a way to make the best use of everyone's knowledge, resources and relationships before, during and after emergencies. A business is responsible to make their own decisions and implement their own plan.



## How are CRTs formed?

A local team is formed, ideally with a local Team Leader and /or Street / Area Coordinators.

Red Cross supports the CRT to connect with like-minded businesses, community members and emergency services.

CRTs operate in a voluntary opt-in arrangement.

Community meetings are held to support planning, discuss preparedness and share community strengths, skills and resources.

*If you are interested in joining a Business CRT, please contact: [kapps@redcross.org.au](mailto:kapps@redcross.org.au) or 0477 660 146*